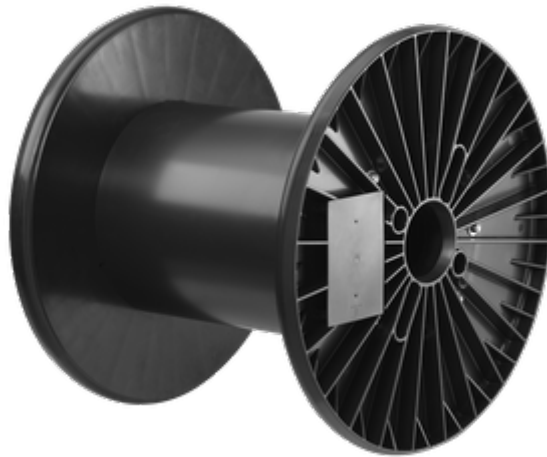


00 NEW PRODUCTS



Designation	Flange Ø	Barrel Ø	Central bore Ø	Width	Winding width	Flange thickness	Winding-volume	Central bore Ø tapered part	Drive-hole/pin	Drive-distance
	d1 [mm]	d2 [mm]	d3 [mm]	L1 [mm]	L2 [mm]	S [mm]	V [cm³]	d4 [mm]	d5 [mm]	E1 [mm]
Reel SD 300 K-LB	300	212	51.5	103	90.5	6	3220		1x10	44.5
Reel USR 435/56-485	435	125	56	485	445	20	60673		1x24	76
Reel LM 540/33,5-275	540	315	33.5	275	50 - 425	20	7554 - 64213		2x35+2x25	115
Reel USR 595	595	250	36 - 100	470	310 - 400	35	70978 - 91585		1x32,5	85.4
Reel VM 600/127-365	600	250	16 - 127	365	50 - 315	25	11682 - 73601	143.5	1x22	95
Reel VM 600/127-430	600	315	16 - 127	430	50 - 425	25	10240 - 87045	143.5	1x22	95
Reel VMV 710/127-660	710	500	16 - 127	660	60 - 560	50	11974 - 111759	143.5	2x36	100
Reel VMV 750/127-660	750	400	16 - 127	660	60 - 560	50	18967 - 177028	143.5	2x36	100
Reel HS 1000/80-790	1000	500	80	790	650	70	382881		2 x 50	160