

03 CYLINDRICAL BARRELLED DELIVERY SPOOLS IEC 60264-2-1

The lighter reels are particularly suitable for export shipments. The heavy reels are specially designed for fine wires, for wire drawing and for dispatch of bare wire.

DIN EN 60264-2-1.

TEST DIFFERENCES

The lighter reels are particularly suitable for export shipments. The heavy reels are specially designed for fine wires, for wire drawing and for dispatch of bare wire.

They are also available with different bore diameters, see leaflet no. 4. Other materials on request.

ATTENTION

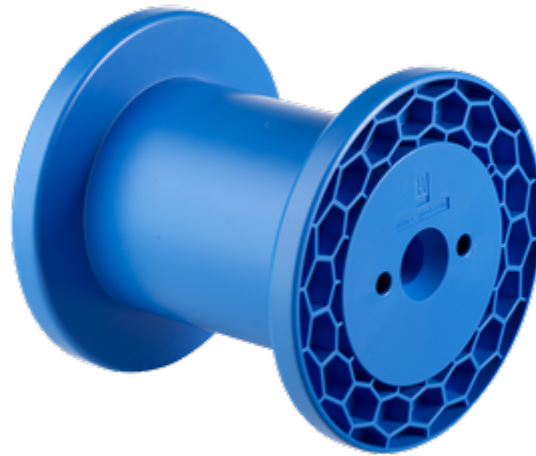
Do not store in direct sunlight. The reels 125 to 710 are preferably packed on pallets with shrink wrapping. All reels can also be packed into corrugated cardboard cartons, which in turn can be loaded on pallets with shrink wrapping. Reels can also be sent in 20 ft. or 40 ft. containers which are suitable for shipments overseas. Please enquire about container capacity and possibilities of combinations.

SPECIALS

Some reels can be supplied with different bore diameters (see special leaflet) or other special versions are available, e. g. with additional holes or a slot in the barrel for the wire or tape start. If details are not shown in our leaflets please enquire. Nearly all types of reels can be provided with company names.

TOLERANCE

All measures, weights and loads as indicated in this brochure are approximate figures. Tolerances and deviations as customary in this trade reserved.



MATERIAL

The materials available are shown in the table:

PS = high impact polystyrene

ABS = Acrylnitrile-Butadiene-Styrene

PA6 = Polyamide

TSG = foam structured material.

Further information is given in our material specifications, which also show the available colours.

Standard colour for PS is green, for PA and ABS anthracite.

Designation	Flange Ø	Barrel Ø	Central bore Ø	Width	Winding width	Flange thickness	Winding-volume	Central bore Ø tapered part	Drive-hole/pin	Drive-distance
	d1 [mm]	d2 [mm]	d3 [mm]	L1 [mm]	L2 [mm]	S [mm]	V [cm ³]	d4 [mm]	d5 [mm]	E1 [mm]
Reel K 40	40	25	11	50	37.5	6	29	15		
Reel K 50	50	32	11	50	38	6	44	15		
Reel K 63	63	40	11	63	49	7	91	15		
Reel K 80	80	50	16	80	64	8	196	24	2x7	20
Reel 100-E	100	63	16	100	80	10	379	24	2x7	20
Reel K 100	100	63	16	100	80	10	379	24	2x7	20

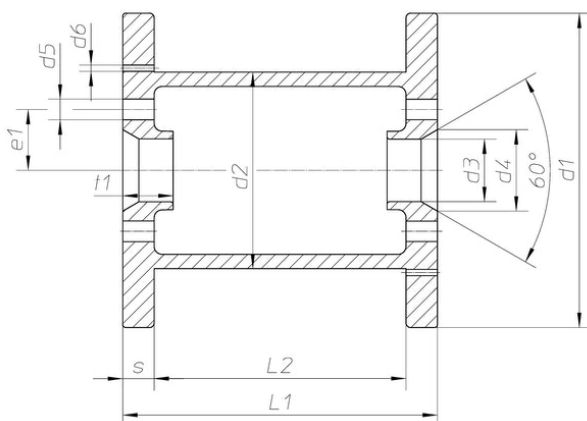
Designation	Flange Ø	Barrel Ø	Central bore Ø	Width	Winding width	Flange thickness	Winding- volume	Central bore Ø tapered part	Drive- hole/pin	Drive- distance
	d1 [mm]	d2 [mm]	d3 [mm]	L1 [mm]	L2 [mm]	S [mm]	V [cm³]	d4 [mm]	d5 [mm]	E1 [mm]
Reel 125-E	125	80	16	125	100	12.5	725	24	2x7	20
Reel K 125	125	80	16	125	100	12.5	725	24	2x7	20
Reel 160 S	160	100	16 - 22	160	128	16	1568	34	2x13	32
Reel K 160-R	160	100	22.2	160	128	16	1568			
Reel 200 E	200	125	16 - 22	200	160	20	3063	34	2x13	32
Reel 200 S	200	125	22	200	160	20	3063	34	2x13	32
Reel K 200	200	125	16 - 22	200	160	20	3063	34	2x13	32
Reel K 200-R	200	125	22.2	200	160	20	3063			
Reel SP 200	200	125	22	200	160	20	3063	34	2x13	32
Reel 250 E	250	160	16 - 22	200	160	20	4637	34	2x13	32
Reel DWF 250	250	160	16 - 22	200	160	20	4637	34	2x13	32
Reel K 250	250	160	16 - 22	200	160	20	4637	34	2x13	32
Reel KN 250-R	250	160	22.2	200	160	20	4637			
Reel SP 250	250	160	22	200	160	20	4637	34	2x13	32
Reel DWF 355	355	224	36	200	160	20	9531			
Reel K 355	355	224	36	200	160	20	9531			
Reel DWF 500	500	315	36	250	180	35	21315			
Reel K 500	500	315	36	250	180	35	21315			
Reel VM 710/51-250	710	500	51	250	180	35	35922			

Designation	Outer Ø	Overall height	Inner Ø bottom	Inner Ø top	
	d1 max	h1 max	d2	d3	h2 min
Container VD 50	55	54	-	-	-
Container VD 63	68	66.5	-	-	-
Container VD 80	86	85	-	-	-
Container VD 100	107	105.5	-	-	-
Container VD 125	133	132	-	-	-

Designation	Outer Ø	Overall height	Inner Ø bottom	Inner Ø top	
	d1 max	h1 max	d2	d3	h2 min
Container VD 160	169	167	-	-	-

TECHNICAL DRAWING

Spools



Container

