

17 SPOOLS FOR LOW ALLOY WIRES

Häfner dispatch and production reels for low alloy wires

PACKAGING

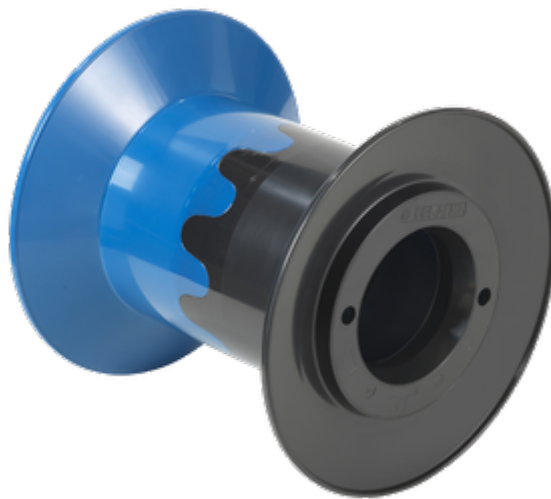
PACKAGING

On request

TOLERANCES

TOLERANCES

All dimensions, weights and loads stated are approximate values; tolerances and deviations which are customary for the industry remain reserved..



MATERIAL

HIPS = high impact polystyrene

ABS = acrylonitrile-butadiene-styrene

PA6 = polyamide

Other materials on request.

Further details regarding material can be found in our material data sheets.

Designation	Flange Ø	Barrel Ø	Central bore Ø	Width	Winding width	Flange thickness	Winding- volume	Central bore Ø tapered part	Drive- hole/pin	Drive- distance
	d1 [mm]	d2 [mm]	d3 [mm]	L1 [mm]	L2 [mm]	S [mm]	V [cm³]	d4 [mm]	d5 [mm]	E1 [mm]
Reel FR 200 V	200	110	32	180	160	10	3506			
Reel FR 200	202	110	32.5	180	160	10	3605			
Flange FK 355/30 °	355	217	16 - 127			45.5		143.5		
Flange FR 355 K	355	214	16 - 127		50 - 310	20	3144 - 19492	143.5		
Flange FR 355 P	355	217	16 - 127			20		143.5		
Reel FB 355	355	217	16 - 127	344	269	28	18625	143.5		
Reel FB 355/15 °	355	217	16 - 127	344	288	28	19124	143.5		
Reel FB 355/30 °	355	217	16 - 127	344	250	47	18190	143.5		
Reel FR 355/127-350	355	224	16 - 127	350	50 - 310	20	2979 - 18467	143.5		
Reel VM 355/127-344	355	224	16 - 127	344	50 - 310	17	2979 - 18467	143.5		
Flange FK 570/45°	570	280	16.8			130				

TECHNICAL DRAWING

Spools

