

VASSENA® SHAVING DIES

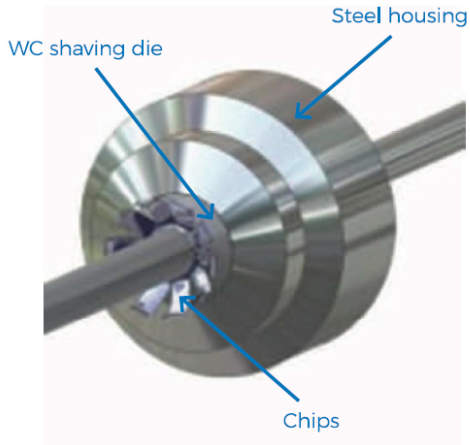
Shaving dies

SHAVING DIES

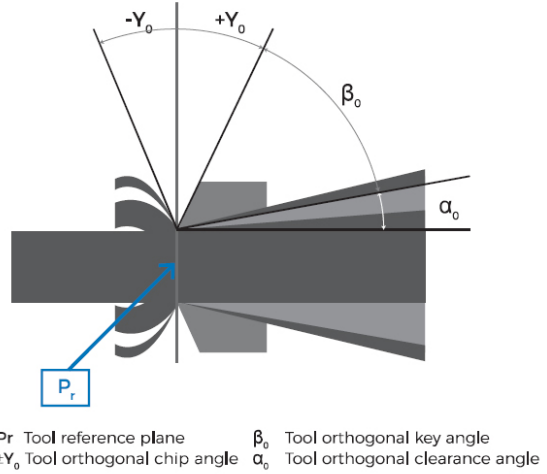
Draw-peeling – also known as shaving – is a cutting procedure. The cutting edge in this case is a draw-peeling tool/ shaving die. This is a static tool with a circular blade. The geometry is similar to that of a regular drawing die in the wire industry. The main difference is that, in contrast to the transformative geometry of the drawing die, there is a cutting edge in the draw-peeling tool. A descaling and a coating that is usually required for steel wire is not necessary in front of this cutting operation.

Shaving operation shall guarantee:

- To remove continuously a uniform thickness of metal
- At high speed
- Separating the removed layer into a plurality of strips and said strips being removed radially from the rod
- Produce a smooth surface thereon.



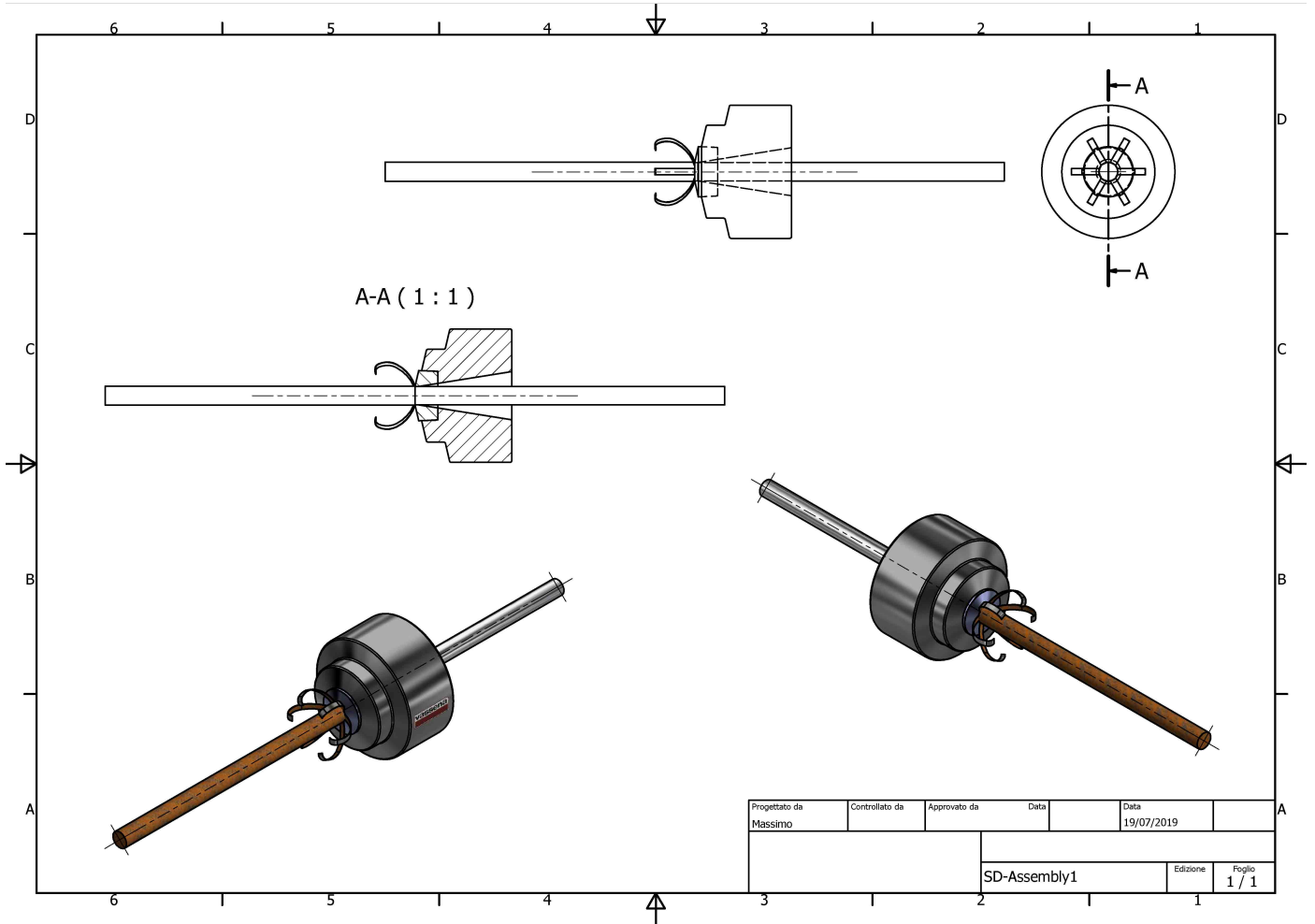
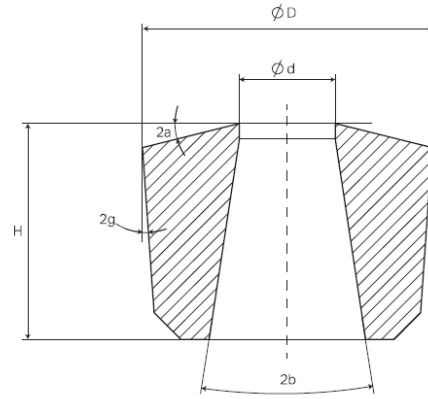
SHAVING DIE ANGLE



TÜM SORU VE TALEPLERİNİZ İÇİN HİZMETİNİZDEYİZ!
SOMAR İSTANBUL DIŞ TİC. ve ELEKTRONİK SAN. LTD. ŞTİ.
www.somaristanbul.com
info@somaristanbul.com

Hyperion offers a wide range of shaving rough blanks made of two Cemented Carbide grades MP10 and ES35.

D (mm)	H (mm)	d (mm)	2a (°)	2b (°)	2g (°)	GRADE
16.18+/-0.01	7.4+/-0.12	5.95	13	18	0	MP10
16.18+/-0.01	7.4+/-0.12	5.35	13	18	0	MP10
16.18+/-0.01	7.4+/-0.12	6.95	13	18	0	MP10
16.18+/-0.01	7.4+/-0.12	7.95	13	18	0	MP10
16.18+/-0.01	7.4+/-0.12	3.95	13	18	0	MP10
16.18+/-0.01	7.4+/-0.12	4.35	13	18	0	MP10
16.18+/-0.01	7.4+/-0.12	3.60	13	18	0	MP10
16+0.7+/-0.3	12+0.6/0.3	5.35	13	18	0	ES35
16.19+/-0.01	7.0+0.55+/-0.3	5.80	13	18	0	ES35
16.19+/-0.01	7.0+0.55+/-0.3	7.40	13	18	0	ES35
16.19+/-0.01	7.0+0.55+/-0.3	6.40	13	18	0	ES35
16.19+/-0.01	7.0+0.55+/-0.3	8.40	13	18	0	ES35



Progettato da Massimo	Controllato da	Approvato da	Data	Data 19/07/2019
SD-Assembly1				Edizione 1 / 1

TÜM SORU VE TALEPLERİNİZ İÇİN HİZMETİNİZDEYİZ!
SOMAR İSTANBUL DIŞ TİC. ve ELEKTRONİK SAN. LTD. ŞTİ.

www.somaristanbul.com

info@somaristanbul.com